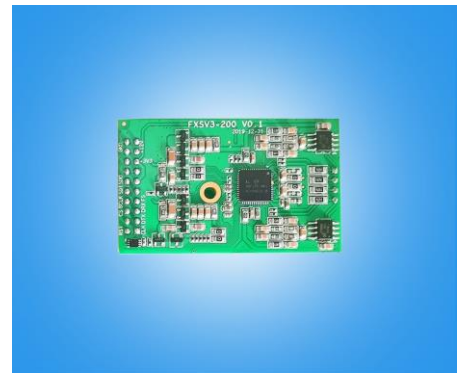




OpenVox FXS-200

The FXS-200 Dual-FXS module allows the OpenVox VS-GWM801 series Analog Gateway Module to terminate 2 analog telephones per module. Because of the modular design, users can activate additional ports at any time with more FXS-200, FXO-200 or FXOS-200 modules. These modules pass all the call features with a standard analog telephone line will help .



Technical Specification

◆ Dimension:57.7mm*35mm

◆ Weight: 10g

OpenVox FXS-200			
Module Type	GSM	WCDMA	LTE
Band	850/900/1800/1900MHz@GSM	900/2100MHz @UMTS 900/1800MHz @GSM	LTE FDD: B1/B3/B5/B8 LTE TDD: B38/B38/B40/B41 WCDMA: B1/B8 TD-SCDMA: B34/B39 CDMA: BC0 GSM: 900/1800MHz

Office Address	Contact Us Via Mobile	Contact Us Via Mail
----- Asfera Technologies Private Limited , Saroj Tower, Office No:- 15 First Floor, 59/1, above Bank of Baroda, Kalkaji Extension, New Delhi, 110019.	----- +91-9066677770 +91-1146579777	----- info@asfera.in info@gsmgateway.in sales@asfera.in